



A Holistic Approach to School Security

ASIS International 53rd Annual Seminar

09/25/07

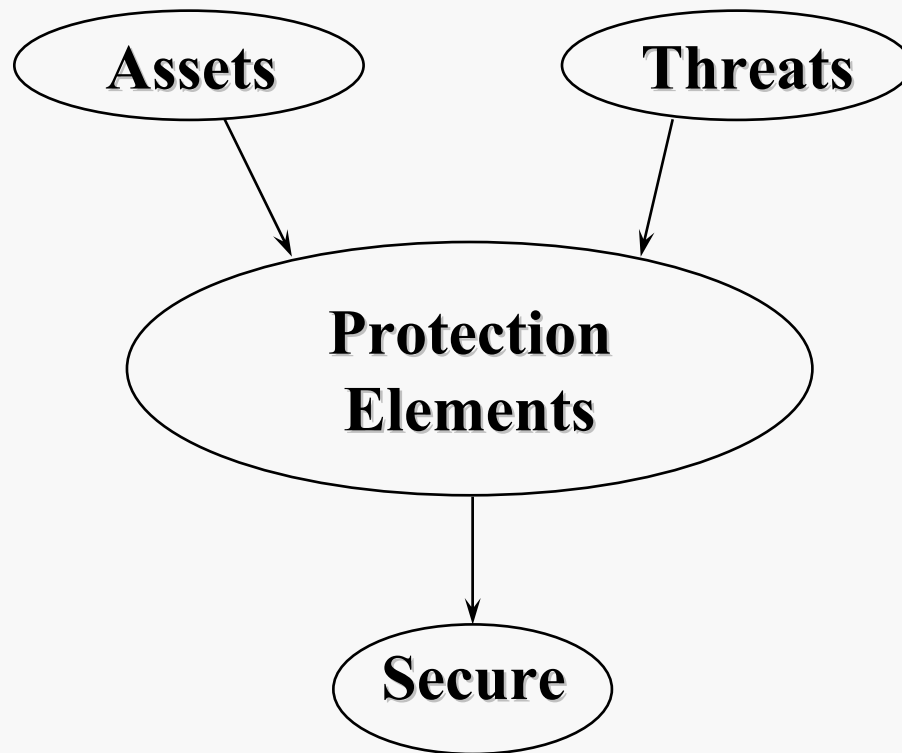
© 2007 RETA Security, Inc.

Presenter Background

- President, RETA Security, Inc.
- Physical Security Professional (PSP)
- VAM – Certified (SNL)
- SCAT Member (NOVA)
- Illinois Terrorism Task Force (ITTF)
- Assessments, Policy Development, Training, Expert Witness
- paul@retasecurity.com



Security Planning



Controlled Documents

Configuration Control

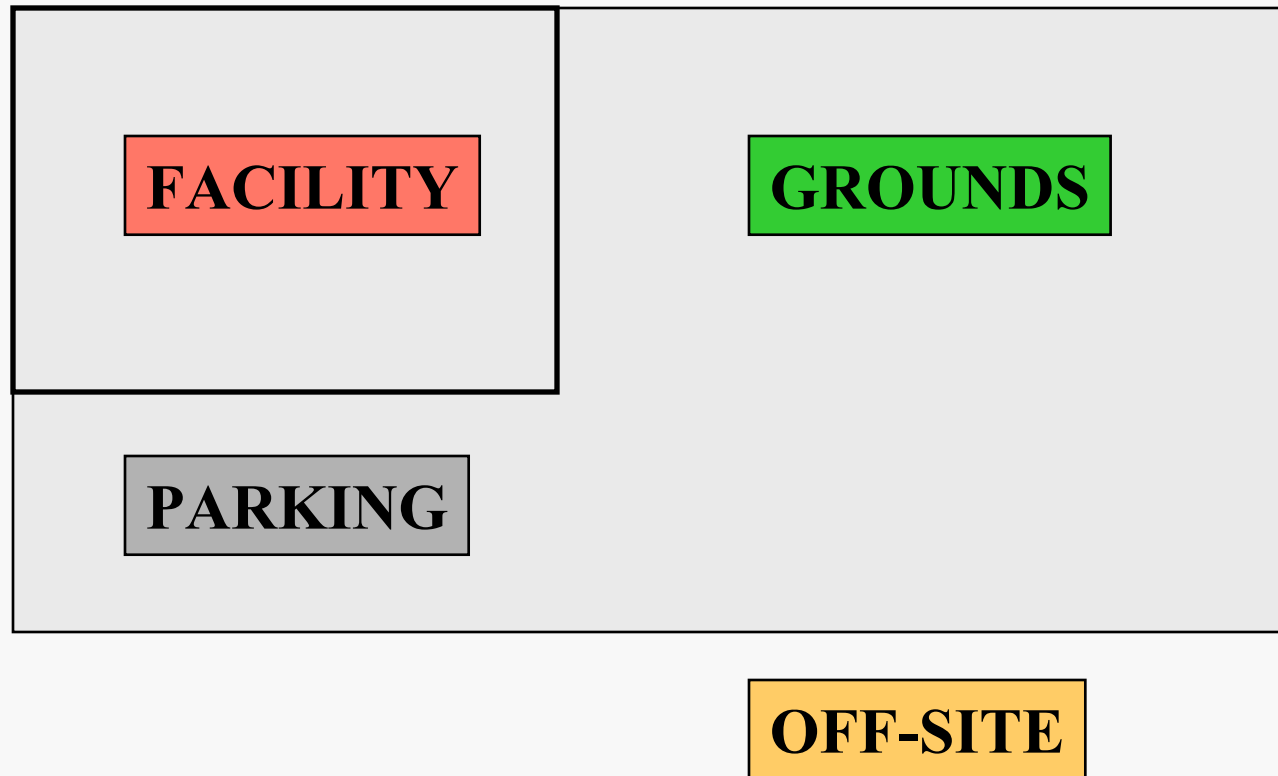
- **Management**
- **Building Security**
- **Violence Prevention**
- **Staff Training**
- **Crisis Management**

Asset Definition

- **People** – students, staff, visitors
- Places – buildings and grounds
- Things – equipment, records, positive climate



Asset Locations

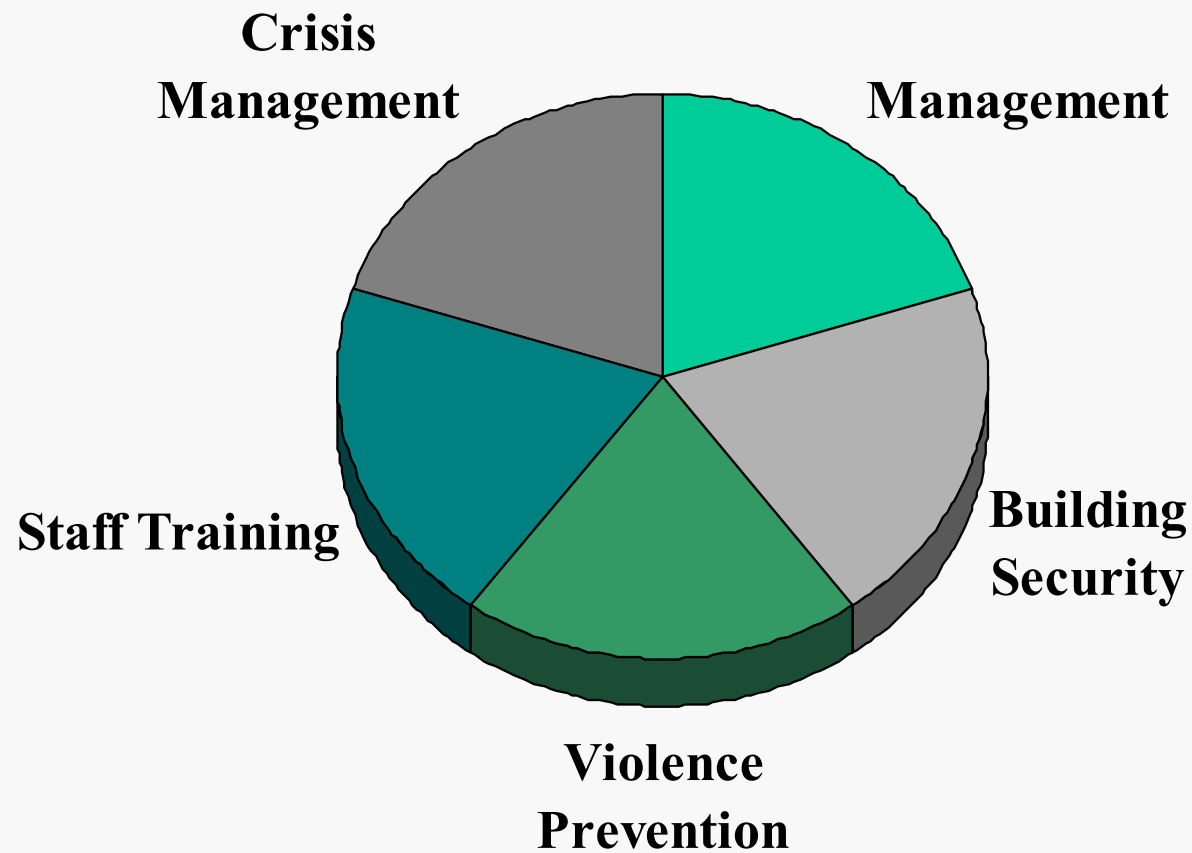


Adversary Tactics

- Tactics that can be used are:
 - Force: physical power exerted against a person or thing
 - Deceit: representing as true what is known to be false
 - Stealth: artfully sly action



Security Assessments



Security Policies

- Closed Campus Policy - requires exterior doors to be closed and locked when the facility is occupied. Visitors must enter through the main entrance and sign-in at the main office.
- Lock Down Policy - identifies areas inside the building, such as classrooms, that can serve as “safe havens” or shelters should a dangerous situation (i.e. an incident involving an intruder) arise.

Operating Profile

Operations:

Normal Operations

Facility Open

Facility Closed

Assessment Topics:

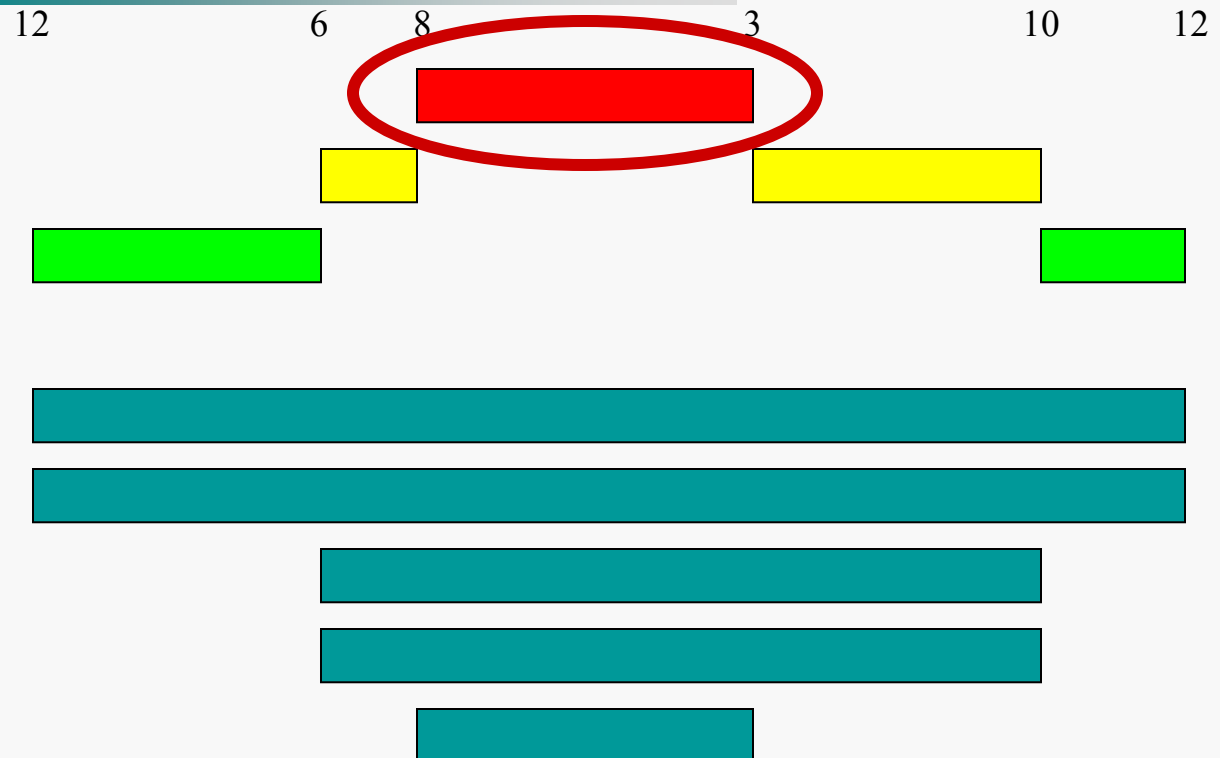
Management

Building Security

Crisis Management

Violence Prevention

Staff Training



Building Security Elements

Deterrence: training, briefings, awareness, testing, lighting, signage, fencing, prevention programs

Detection: alarm system, CCTV, duress button, entry control, contraband detector, personnel

Delay: locks, doors, glazing

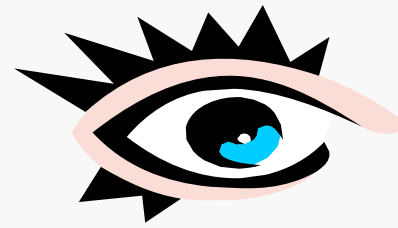
Communication: radio, wireless, intercom, PA*

Response: security personnel, law enforcement

**PA systems should have battery backup.*

Visual Inspection

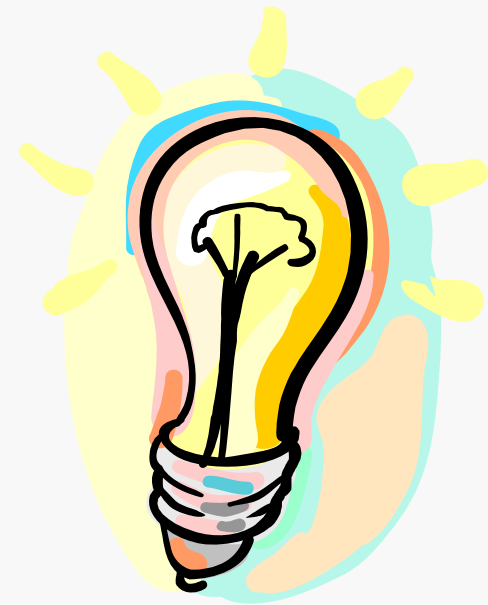
- Regularly scheduled tests
- Periodic spot checks
- Personnel interviews
- Tests, results & interviews should be fully documented



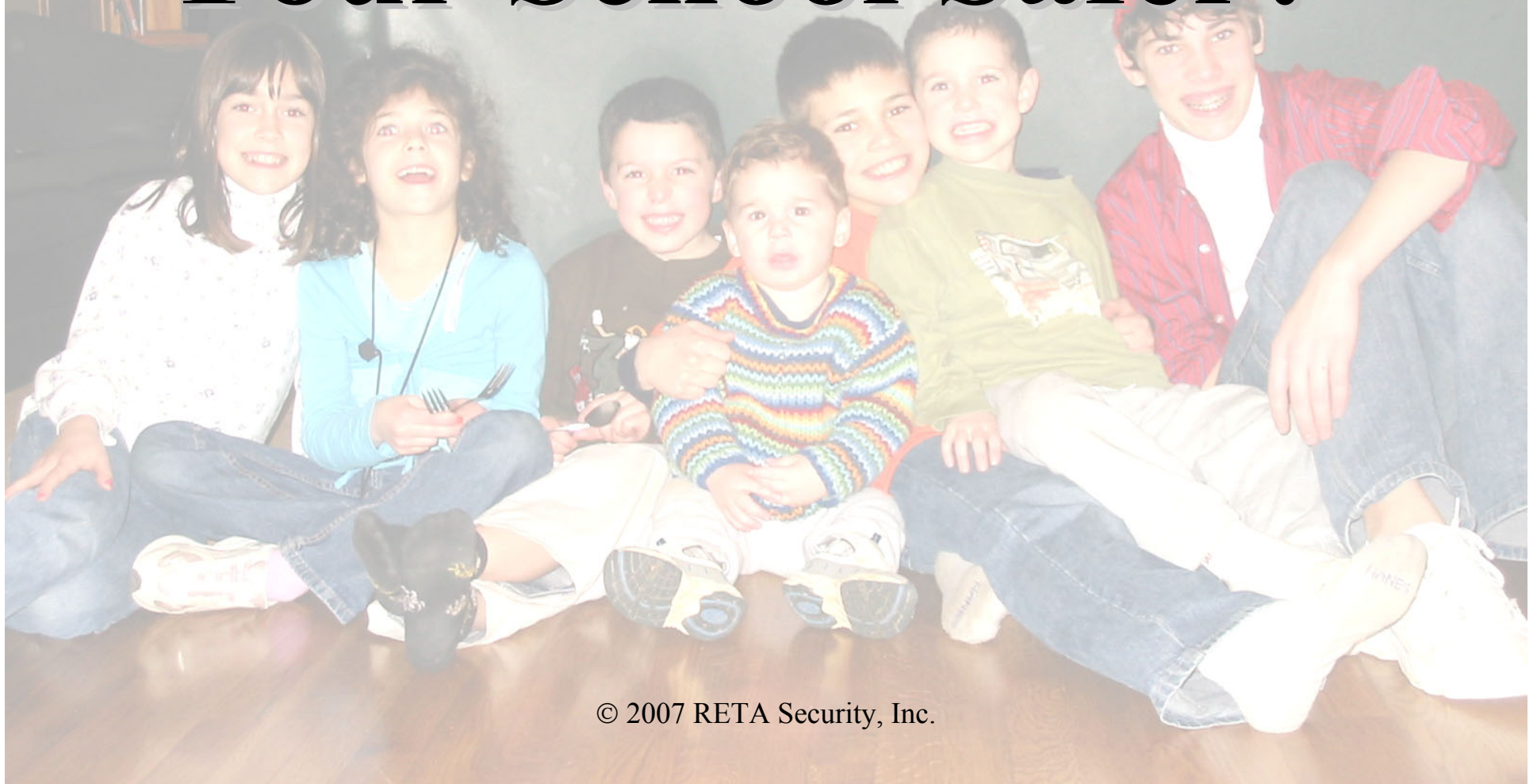
Note: Tests and spot checks should include both security hardware and staff/faculty practices.

Security Resources

- ncpc.org/besafe
- familywatchdog.us
- ed.gov/emergencyplan
- Responders & Carriers
- Tip Lines (866-SPEAKUP)
- isbe.net/sos/htmls/safe_at_school.htm
- Lock Down (cpsv.org, 800-299-6054)



How Can You Make Your School Safer?



© 2007 RETA Security, Inc.